

Brand AXOR  
 Art. Name **AXOR One** Single lever basin mixer for concealed installation wall-mounted with lever handle and spout 160 mm  
 Art. Nr. 48170950  
 Surface Brushed Brass

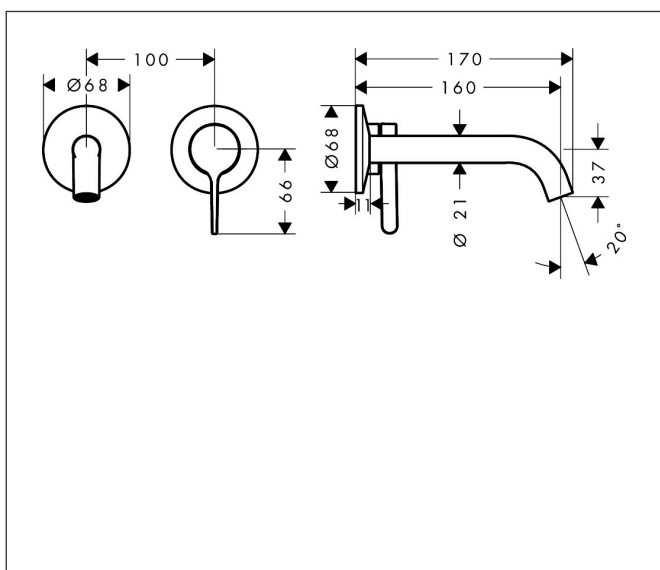
## Product picture



## Features

- consists of: single lever basin mixer for concealed installation wall-mounted, waste set
- projection: 160 mm
- handle variant: lever handle
- spray type: NormalSpray
- maximum flow rate at 3 bar: 5 l/min
- ceramic cartridge
- temperature limitation adjustable
- suitable for continuous flow water heaters
- non-closing waste set
- connection type: basic set
- connection dimension: DN15
- handle can be positioned on the right or left, depending on the basic set installation
- EU taxonomy: max. 6 l/min - Substantial Contribution (SC) possible

## Drawing



## Technology




## Spray Types



Brand AXOR  
Art. Name **AXOR One** Single lever basin mixer for concealed installation wall-mounted with lever handle and spout 160 mm  
Art. Nr. 48170950  
Surface Brushed Brass

---

## Required parts

Product picture	Art. Name	Art. Nr.
	AXOR Basic set for single lever basin mixer for concealed installation wall-mounted	13623180

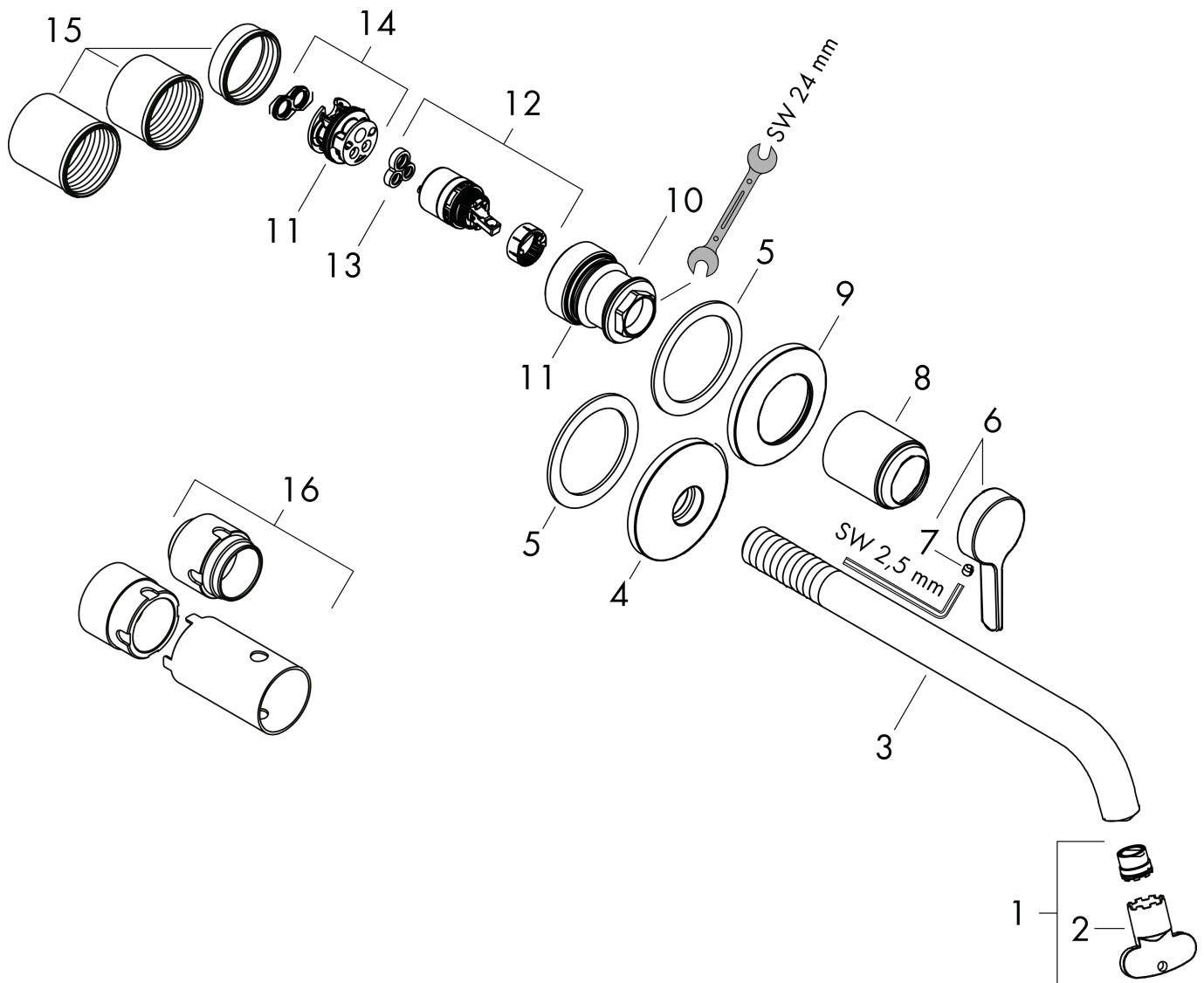
Brand AXOR  
 Art. Name **AXOR One** Single lever basin mixer for concealed installation wall-mounted with lever handle and spout 160 mm  
 Art. Nr. 48170950  
 Surface Brushed Brass

## Flow chart



Brand AXOR  
Art. Name **AXOR One** Single lever basin mixer for concealed installation wall-mounted with lever handle and spout 160 mm  
Art. Nr. 48170950  
Surface Brushed Brass

## Spare Parts Drawing for build year: >06/25



Brand AXOR  
 Art. Name **AXOR One** Single lever basin mixer for concealed installation wall-mounted with lever handle and spout 160 mm  
 Art. Nr. 48170950  
 Surface Brushed Brass

## Spare parts list for build year: >06/25

Pos.	Description	Articlenumber
1	aerator cpl.	93118000
2	special tool	98987000
3		85028950
4	escutcheon for spout	94348950
5	washer	97600000
6	handle	94347950
7	hollow set screw M5x5	98446000
8	sleeve	93989950
9	escutcheon for handle	94349000
10	nut	94752000
11	O-ring 26x2	98147000
12	cartridge, assy	93760000
13	seal	93383000
14	adapter for cartridge	95634000
15	fixing set	97971000
16	extension 25 mm	13586000
a	pop up waste	51301950
18	adapter for exchanged connections	93819000