

Brand AXOR  
 Art. Name **AXOR ShowerSolutions** Overhead shower 240/240 1jet with ceiling connection  
 Art. Nr. 10929300  
 Surface Polished Red Gold

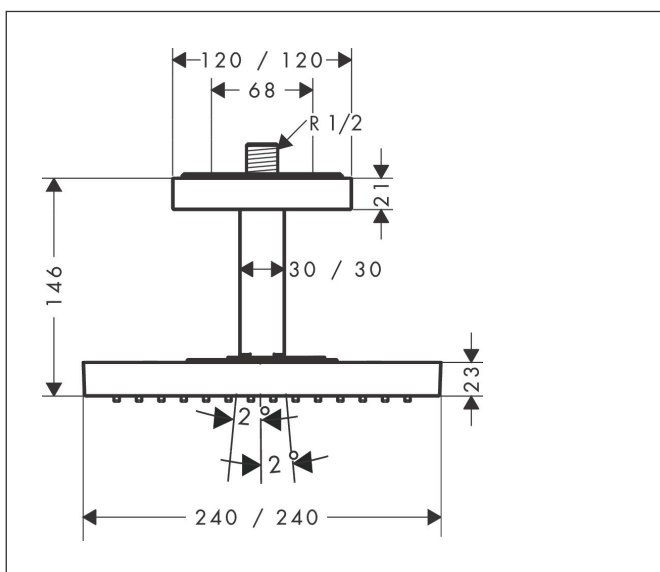
## Product picture



## Features

- consists of: overhead shower, ceiling connector
- shower head size: 240 x 240 mm
- spray type: RainAir
- flow rate RainAir spray at 3 bar: 12 l/min
- function from: 10,5 l/min
- maximum flow rate at 3 bar: 12 l/min
- minimum flow pressure: 2 bar
- material spray disc: metal
- spray disc removable for cleaning
- metal ceiling connector
- ceiling connection length: 102 mm
- installation: ceiling mounting
- connection thread: G 1/2
- connection dimension: DN15
- suitable for continuous flow water heaters

## Drawing



## Technology

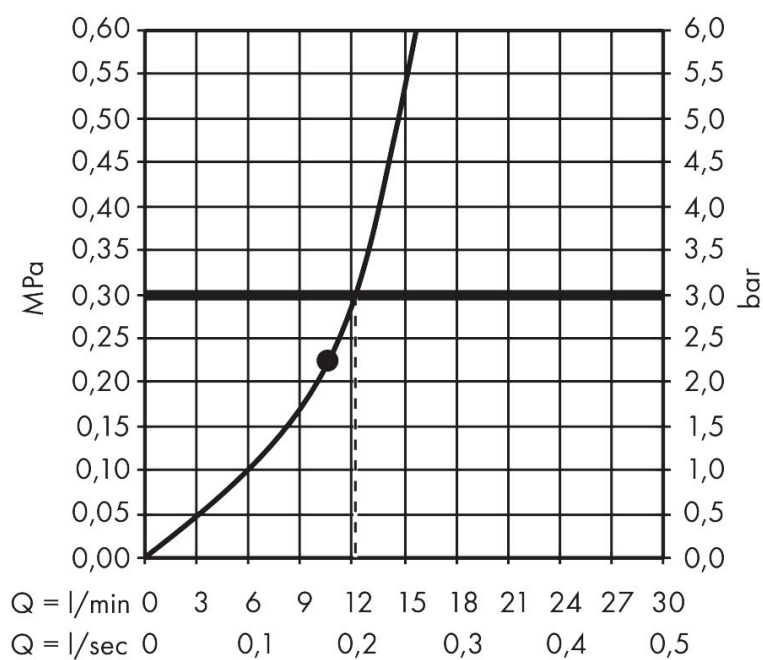


## Spray Types



Brand AXOR  
 Art. Name **AXOR ShowerSolutions** Overhead shower 240/240 1jet with ceiling connection  
 Art. Nr. 10929300  
 Surface Polished Red Gold

## Flow chart

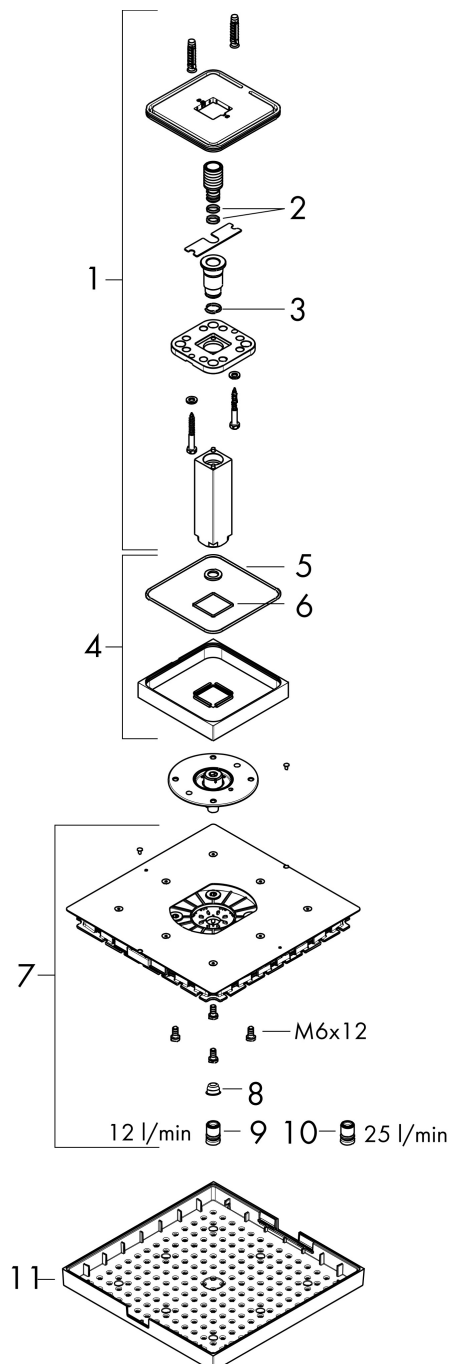


- 1 With flow limiter (12 l/min)
- 2 With flow limiter (25 l/min)

The consumption was measured in combination with the appropriate fittings (thermostat/mixer/in-wall valve) to reflect actual application in practice.

Brand AXOR  
 Art. Name **AXOR ShowerSolutions** Overhead shower 240/240 1jet with ceiling connection  
 Art. Nr. 10929300  
 Surface Polished Red Gold

## Spare Parts Drawing for build year: >11/16



Brand AXOR  
Art. Name **AXOR ShowerSolutions** Overhead shower 240/240 1jet with ceiling connection  
Art. Nr. 10929300  
Surface Polished Red Gold

---

## Spare parts list for build year: >11/16

Pos.	Description	Articlenumber
1	shower arm	95887300
2	O-ring 11x2	98127000
3	O-ring 14x2	98129000
4	escutcheon	95888300
5	O-ring 130x2,5	98408000
6	O-ring 36x2	98156000
7	spray body	95889300
8	filter	97735000
9	air jet	95802000
10	air jet	93457000
11	decor plate	95890300